

User Interfaces

Thai Son Hoang

Department of Computer Science, Swiss Federal Institute of Technology Zürich (ETH Zürich)

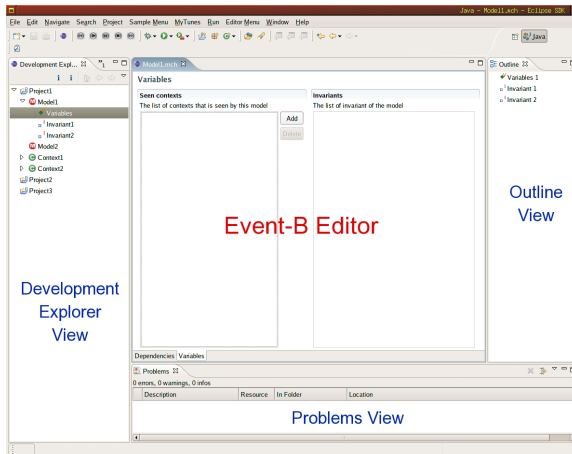
Third RODIN Workshop - ETH Zürich

User Interfaces

- Editor Interface.
- Prover Interface.

Proposed Editor Interface

Contains 3 views and an editor.



Views and Editors

● Explorer View

- Tree-structured views of the projects, models, contexts, etc.
- Connects to the *Database*.
- Connects to the *Event-B Editor* for editing components.

● Event-B Editor

- For editing a component such as a model, a context, etc.
- Multi-page Editor.
- Form Editor.
- Connects with the *Database*.

● Outline View

- Connects with the current active *Event-B Editor*.
- Provides navigations for the editing component.

● Problems View

- Shows all error messages.
- Connects with *Event-B Editors* for navigations of error messages.

Views and Editors

- **Explorer View**
 - Tree-structured views of the projects, models, contexts, etc.
 - Connects to the *Database*.
 - Connects to the *Event-B Editor* for editing components.
- **Event-B Editor**
 - For editing a component such as a model, a context, etc.
 - Multi-page Editor.
 - Form Editor.
 - Connects with the *Database*.
- **Outline View**
 - Connects with the current active *Event-B Editor*.
 - Provides navigations for the editing component.
- **Problems View**
 - Shows all error messages.
 - Connects with *Event-B Editors* for navigations of error messages.

Views and Editors

- **Explorer View**
 - Tree-structured views of the projects, models, contexts, etc.
 - Connects to the *Database*.
 - Connects to the *Event-B Editor* for editing components.
- **Event-B Editor**
 - For editing a component such as a model, a context, etc.
 - Multi-page Editor.
 - Form Editor.
 - Connects with the *Database*.
- **Outline View**
 - Connects with the current active *Event-B Editor*.
 - Provides navigations for the editing component.
- **Problems View**
 - Shows all error messages.
 - Connects with *Event-B Editors* for navigations of error messages.

Views and Editors

- **Explorer View**
 - Tree-structured views of the projects, models, contexts, etc.
 - Connects to the *Database*.
 - Connects to the *Event-B Editor* for editing components.
- **Event-B Editor**
 - For editing a component such as a model, a context, etc.
 - Multi-page Editor.
 - Form Editor.
 - Connects with the *Database*.
- **Outline View**
 - Connects with the current active *Event-B Editor*.
 - Provides navigations for the editing component.
- **Problems View**
 - Shows all error messages.
 - Connects with *Event-B Editors* for navigations of error messages.

Views and Editors

- **Explorer View**
 - Tree-structured views of the projects, models, contexts, etc.
 - Connects to the *Database*.
 - Connects to the *Event-B Editor* for editing components.
- **Event-B Editor**
 - For editing a component such as a model, a context, etc.
 - Multi-page Editor.
 - Form Editor.
 - Connects with the *Database*.
- **Outline View**
 - Connects with the current active *Event-B Editor*.
 - Provides navigations for the editing component.
- **Problems View**
 - Shows all error messages.
 - Connects with *Event-B Editors* for navigations of error messages.

Views and Editors

- **Explorer View**
 - Tree-structured views of the projects, models, contexts, etc.
 - Connects to the *Database*.
 - Connects to the *Event-B Editor* for editing components.
- **Event-B Editor**
 - For editing a component such as a model, a context, etc.
 - Multi-page Editor.
 - Form Editor.
 - Connects with the *Database*.
- **Outline View**
 - Connects with the current active *Event-B Editor*.
 - Provides navigations for the editing component.
- **Problems View**
 - Shows all error messages.
 - Connects with *Event-B Editors* for navigations of error messages.

Views and Editors

- **Explorer View**
 - Tree-structured views of the projects, models, contexts, etc.
 - Connects to the *Database*.
 - Connects to the *Event-B Editor* for editing components.
- **Event-B Editor**
 - For editing a component such as a model, a context, etc.
 - Multi-page Editor.
 - Form Editor.
 - Connects with the *Database*.
- **Outline View**
 - Connects with the current active *Event-B Editor*.
 - Provides navigations for the editing component.
- **Problems View**
 - Shows all error messages.
 - Connects with *Event-B Editors* for navigations of error messages.

Views and Editors

- **Explorer View**
 - Tree-structured views of the projects, models, contexts, etc.
 - Connects to the *Database*.
 - Connects to the *Event-B Editor* for editing components.
- **Event-B Editor**
 - For editing a component such as a model, a context, etc.
 - Multi-page Editor.
 - Form Editor.
 - Connects with the *Database*.
- **Outline View**
 - Connects with the current active *Event-B Editor*.
 - Provides navigations for the editing component.
- **Problems View**
 - Shows all error messages.
 - Connects with *Event-B Editors* for navigations of error messages.

Views and Editors

- **Explorer View**
 - Tree-structured views of the projects, models, contexts, etc.
 - Connects to the *Database*.
 - Connects to the *Event-B Editor* for editing components.
- **Event-B Editor**
 - For editing a component such as a model, a context, etc.
 - Multi-page Editor.
 - Form Editor.
 - Connects with the *Database*.
- **Outline View**
 - Connects with the current active *Event-B Editor*.
 - Provides navigations for the editing component.
- **Problems View**
 - Shows all error messages.
 - Connects with *Event-B Editors* for navigations of error messages.

Views and Editors

- **Explorer View**
 - Tree-structured views of the projects, models, contexts, etc.
 - Connects to the *Database*.
 - Connects to the *Event-B Editor* for editing components.
- **Event-B Editor**
 - For editing a component such as a model, a context, etc.
 - Multi-page Editor.
 - Form Editor.
 - Connects with the *Database*.
- **Outline View**
 - Connects with the current active *Event-B Editor*.
 - Provides navigations for the editing component.
- **Problems View**
 - Shows all error messages.
 - Connects with *Event-B Editors* for navigations of error messages.

Views and Editors

- **Explorer View**
 - Tree-structured views of the projects, models, contexts, etc.
 - Connects to the *Database*.
 - Connects to the *Event-B Editor* for editing components.
- **Event-B Editor**
 - For editing a component such as a model, a context, etc.
 - Multi-page Editor.
 - Form Editor.
 - Connects with the *Database*.
- **Outline View**
 - Connects with the current active *Event-B Editor*.
 - Provides navigations for the editing component.
- **Problems View**
 - Shows all error messages.
 - Connects with *Event-B Editors* for navigations of error messages.

Views and Editors

- **Explorer View**
 - Tree-structured views of the projects, models, contexts, etc.
 - Connects to the *Database*.
 - Connects to the *Event-B Editor* for editing components.
- **Event-B Editor**
 - For editing a component such as a model, a context, etc.
 - Multi-page Editor.
 - Form Editor.
 - Connects with the *Database*.
- **Outline View**
 - Connects with the current active *Event-B Editor*.
 - Provides navigations for the editing component.
- **Problems View**
 - Shows all error messages.
 - Connects with *Event-B Editors* for navigations of error messages.

Prover Interface

- Integrated into *Eclipse* interface.
- Prototype will be based on *Click'N'Prove* (with improvements).
- Showing relevant information to the obligation automatically.

A Demo