

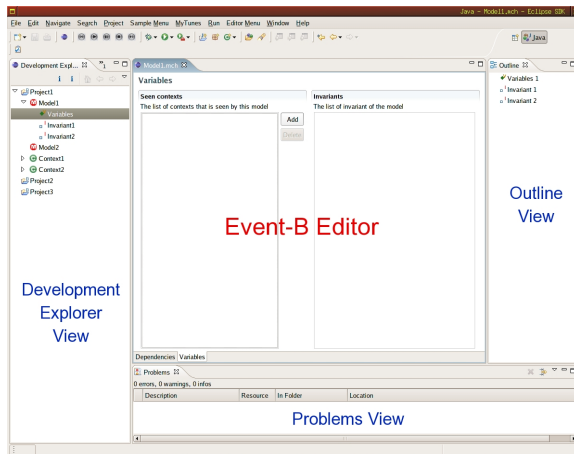
User Interfaces

- Editor Interface.
- Prover Interface.

1 Editor Interface

Proposed Editor Interface

Contains 3 views and an editor.



Views and Editors

- *Explorer View*
 - Tree-structured views of the projects, models, contexts, etc.
 - Connects to the *Database*.
 - Connects to the *Event-B Editor* for editing components.
- *Event-B Editor*
 - For editing a component such as a model, a context, etc.
 - Multi-page Editor.
 - Form Editor.
 - Connects with the *Database*.
- *Outline View*
 - Connects with the current active *Event-B Editor*.
 - Provides navigations for the editing component.
- *Problems View*
 - Shows all error messages.
 - Connects with *Event-B Editors* for navigations of error messages.

2 Prover Interface

Prover Interface

- Integrated into *Eclipse* interface.
- Prototype will be based on *Click'N'Prove* (with improvements).
- Showing relevant information to the obligation automatically.

3 Demo of the Editor Interface

A Demo