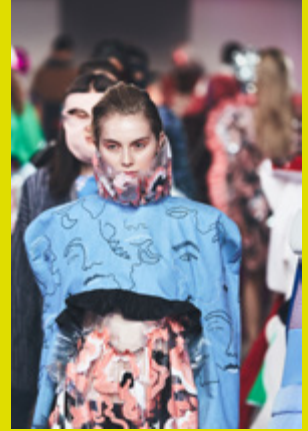




University of
Southampton

FOUNDING
MEMBER OF THE
**RUSSELL
GROUP**



WINCHESTER SCHOOL OF ART



**OPEN DAY PROGRAMME
WEDNESDAY 30 OCTOBER**



WELCOME

Immerse yourself in the atmosphere of our creative campus and be inspired by our students' work and influences at Winchester School of Art (WSA).

Explore your favourite subject, discover the amazing opportunities you'll have here and visit the spaces and facilities that you'll study in. Our facilities are filled with a diverse range of equipment to support you during your studies, including:

- High-spec computer suites with Mac and PC computers.
- Digital resources including consoles, VR and AR, multiple photography studios and an editing suite.
- Specialist printing equipment including laser cutting, 3D printer and scanner and a Mimaki fabric printer.
- On-campus specialist art and design Gallery and Library.
- Fashion studios equipped with a full range of sewing machines including multi-thread overlockers, presses and cutting tables.
- A range of knitting machines including single, double bed and computerised Shima Seiki knitting machines.
- Bright weaving workshops including AVL dobby looms and a TC2 digital loom.
- Industry standard software across all disciplines including CLO 3D, Unity, Blender and the full Adobe suite.
- Sculpture workshops, including a bronze foundry with ceramic kilns, meta and plastic fabrication shop, letterpress printing machines and etching presses.
- Large screen-printing facilities and dye-labs.
- Winchester West Wing, delivering leading-edge fashion leadership education in a contemporary and modern environment.



THE CITY OF WINCHESTER

Winchester is a vibrant city with diverse cultural life. Whether you want to spend your free time learning about the city's history or socialising with friends, Winchester has it covered.

DISCOVER FUN AND INDEPENDENT PLACES TO EAT AND DRINK SUCH AS:

- Forte Kitchen
- Three Joe's Pizza
- Queen's Inn (pub and microbrewery)
- Open House Deli
- Gurkha's Inn

EXPLORE THINGS TO DO INCLUDING:

- Unique and lively shopping such as The Hambledon and Anthropologie.
- Independent cinema and theatres.
- New leisure centre with fantastic facilities.

DELVE INTO THE HISTORY OF WINCHESTER AND ENJOY NATURE'S BEAUTY, VISIT:

- St Catherine's Hill - a 30-minute walk from WSA with picturesque views over the city (perfect for a picnic)
- Winnall Moors nature reserve close to campus
- Winchester Cathedral
- Wolvesey Castle

RANKED 8TH FOR ART AND DESIGN RESEARCH QUALITY

Complete University Guide, 2025

COLLEGE MEMBER OF THE BRITISH FASHION COUNCIL

SUBJECT DROP-INS (See pages 4 and 5 for more details)

GAMES DESIGN & ART: Meet the team and learn more about the course.

GRAPHIC COMMUNICATION: Explore the playful and open-ended approach to a Graphic Communication workshop through creating your own custom Risograph print; starting with geometric source material to layer, cut, mask and fold.

FASHION DESIGN: Meet the team 1-2-1 and learn more about fashion futures at university and beyond.

SUSTAINABLE LUXURY (TEXTILES): Meet staff and students from the course and see the latest textile work on display.

FASHION MARKETING WITH MANAGEMENT: Discuss the programme with the team & student ambassadors and complete our consumer profiling workshop.

CREATIVE COMPUTING: Demonstrations on Augmented Reality, Kinect, Robotics, Microscopy and Biosensing. With an informal chat with Alessandro Ludovico.

FINE ART: Join the programme leader for an art chat.

DISTANCE FROM WSA TO SOUTHAMPTON

17 mins 22 mins

DISTANCE FROM WSA TO LONDON

60 mins 1hr 40 mins

DISTANCE FROM WSA TO THE CITY CENTRE

5 mins 2 mins 4 mins

DISTANCE FROM WSA TO ERASMUS PARK ACCOMMODATION

15 mins 5 mins 10 mins

SCHEDULE OF EVENTS

| WELCOME TALKS | TIME | DURATION | LOCATION |
|-----------------------------------|---------------|---|---|
| Welcome talk | 12:00 | 25 mins | West Side Building, Level 2, Lecture Theatre A |
| | 14:00 | 25 mins | East Side Building, Level 2, Lecture Theatre B |
| Student Life talk | 12:30 | 20 mins | West Side Building, Level 2, Lecture Theatre A |
| | 14:30 | 20 mins | East Side Building, Level 2, Lecture Theatre B |
| SUBJECT TALKS | TIME | DURATION | LOCATION |
| Creative Computing | 14:00 | 50 mins | East Side Building, Level 3, Harvard Lecture Theatre |
| Fashion Design | 14:00 | 50 mins | West Side Lecture Theatre Building, West Side Lecture Theatre |
| Fashion Marketing with Management | 13:00 | 55 mins | West Side Lecture Theatre Building, West Side Lecture Theatre |
| Fine Art | 14:00 | 50 mins | West Side Building, Level 2, Lecture Theatre A |
| Games Design and Art | 13:00 | 50 mins | East Side Building, Level 2, Lecture Theatre B |
| Graphic Communication | 15:00 | 50 mins | West Side Lecture Theatre Building, West Side Lecture Theatre |
| Sustainable Luxury (Textiles) | 15:00 | 50 mins | East Side Building, Level 2, Lecture Theatre B |
| SUBJECT DROP INS | OPEN TIMES | LOCATION | |
| Creative Computing | 12:00 - 16:00 | West Side Building, Level 1, Room 1163 | |
| Fashion Design | 12:00 - 16:00 | West Side Building, Level 2, Fashion Studio 4 | |
| Fashion Marketing with Management | 12:00 - 16:00 | East Side Building, Level 2, Fashion Marketing Studio 1 | |
| Fine Art | 12:00 - 16:00 | West Side Building, Level 2, Library | |
| Games Design and Art | 12:00 - 16:00 | South Building, Level 1, Games Studio | |
| Graphic Communication | 12:00 - 16:00 | East Side Building, Level 3, Room 3013 | |
| Sustainable Luxury (Textiles) | 12:00 - 16:00 | East Side Building, Level 2, Textiles Studio | |

 FOLLOW PURPLE SIGNAGE FOR OPEN DAYS

| OTHER ACTIVITIES | TIME | DURATION | LOCATION |
|----------------------------------|---------------|--|---|
| Portfolio Advice Session | 13:15 15:00 | 30 mins | East Side Building, Level 2, Lecture Theatre B |
| The Winchester Gallery | 12:00 - 18:00 | | West Side Building, Level 1 |
| The Quiet Room | 12:00 - 16:00 | | Please ask us at the check in desk |
| Studio 3015 drop in | 12:00 - 16:00 | | East Side Building, Level 1, Room 1001 |
| TOURS | TIME | LOCATION | DESCRIPTION |
| Accommodation tour (self-guided) | 12:00 - 16:00 | Erasmus Park. Directions on Page 9 or ask our event staff. | Self guide around our Winchester School of Art dedicated halls of residence, Erasmus Park. You'll have the opportunity to view the common room, laundry room and an ensuite flat. If you have any questions, please speak to our accommodation representatives at Erasmus Park or visit the Student Life Hub between 12:00 - 16:00. Information on how to get to Erasmus Park is included on page 8 and 9. |
| Campus Tours | 12:00 - 16:00 | East Side Building, Level 1, Café | Explore the fantastic facilities on offer here are Winchester School of Art with our university guides. You'll have the opportunity to see key facilities for our undergraduate degree programmes. Tours are on foot and take approximately 30 minutes. Last tour departs at 15:30. |
| DROP INS | TIME | LOCATION | |
| Student Life Hub | 12:00 - 16:00 | West Side Building, Level 1 | Head down to the Student Life Hub to find out more from our services how they support you during your studies. Find out more on page 7. |
| Information Point | 12:00 - 16:00 | East Side Building, Level 1, Café | Ask questions and chat with our current student ambassadors and some of our academic staff. We'll be here to assist and direct you throughout the event. |
| Students' Union drop in | 12:00 - 14:00 | East Side Building, Level 1, Café, SUSU desk | Drop in to speak to Students' Union representatives about opportunities outside your degree. Chat to us about events, clubs and societies, and how we represent you during your studies. |
| WSA Library | 09:00 - 16:00 | West Side Building, Level 2 | Take a look around our on-campus library. Browse books, journals, magazines and special collections, such as Artists Books and Visionaires. Or chat with our library staff, on hand to help with any library questions. |

HEAR FROM OUR STUDENTS



"I find my course so interesting, and it really has fuelled my passion to begin working in the fashion industry. I am so grateful for my lecturers who have supported and inspired me the entire way."

My industry knowledge prior to this course was nearly non-existent. Now I feel well prepared to enter the industry and begin my professional career. Enhanced by visits, talks, and networking opportunities, I have been provided with a skill set well equipped for the working world."

CARLY NEWELL
BA FASHION MARKETING WITH MANAGEMENT
FINAL YEAR, 2024



"In Fine Art we are offered so many opportunities to go on trips, at least once a semester we take a trip to London for a gallery day. And depending on which pathway you choose there are always trips and projects curated to your chosen path."

MEGAN BERRY
BA FINE ART
FINAL YEAR, 2024

"Our course included talks from industry members, visits to game studios, and several chances to work using professional methodologies to prepare us for roles in the industry. I was offered an opportunity for a remote summer internship role at a game studio in my second year, which was a fantastic opportunity I wouldn't have had otherwise."



I have gained skills and experience, both academic and course-specific that will be invaluable to me in the future. I have also had the chance to start building connections and attend professional events to further network."

LAURA ALFORD
BA GAMES DESIGN AND ART
FINAL YEAR, 2024



"My course offered a study exchange program, which most other universities didn't offer. I also read about the industry standard equipment that WSA had to offer which was a major pull factor."

I enjoyed the opportunity to experiment and determine a specialism that you wanted to pursue. I enjoyed the studio culture I built with other motion design students."

I studied abroad, which was a once in a lifetime experience that has helped shape me as a designer and opened my perspective."

HAYDN LOVERBRIDGE
BA GRAPHIC ARTS (MOTION DESIGN) FINAL YEAR, 2024



DON'T FORGET:

OUR SUSU REPRESENTATIVES ARE LOCATED AT THE SUSU HELP DESK IN THE CAFÉ THROUGHOUT THE EVENT TO ANSWER YOUR QUESTIONS.

STUDENT LIFE HUB

The Student Life Hub is the place to chat to support teams and find out all about university life, including:

- Accommodation
- Admissions
- Academic Skills Service
- Art and Culture
- Student Inclusion
- Student Disability and Inclusion
- Wellbeing
- Careers and Employability
- Library
- Making your money work for you
- Study Abroad and Exchange

Don't forget to attend our Student Life talks for more information, details can be found on page 4.

Try to make time to learn about clubs and societies, as they're a big part of many students' university experience.

When you join the University, you automatically become a member of the Students' Union (known as SUSU), which is independent of the University. SUSU is here to represent the voice of students at every level and ultimately make your university experience unforgettable. There's a huge variety of events and social activities that you can take part in at our main campus, Highfield, and at WSA including:

WSA Freshers' Fair

- Crafty workshops
- WSA Summer Ball
- WSA Careers Week

SUSU also has over 350 different sports clubs and societies. This includes over 50 societies in the creative industries such as:

- Wessex Scene Magazine
- Photographic Society
- Hookers, Knitters and Stitchers Society
- Games Society
- Art Society
- Music Society
- A range of sports societies
- Theatre Society

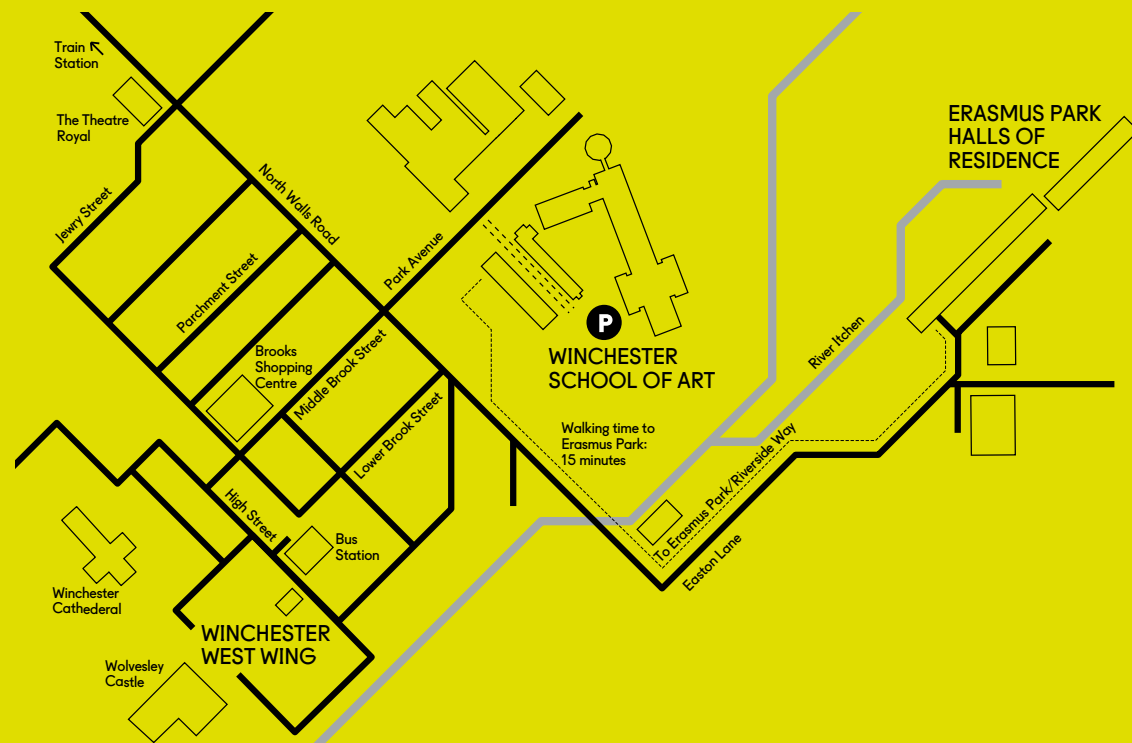
"My tips for an Open Day are to make sure you write down a list of questions (for staff and students that you'll meet), take photos and walk around - either in a tour group or by yourself, it's a good way to learn the space!"

HARRISON JONES (HE/HIM)
BA FINE ART, 2023



MAKE YOURSELF AT HOME

Our welcoming and safe accommodation provides excellent facilities with 24-hour support and advice available, and a fantastic environment for you to make new friends and experience student life.



WHY LIVE IN UNIVERSITY ACCOMMODATION?

- Includes a common room, laundrette and bicycle store
- High-speed internet in all bedrooms and communal spaces
- Frequent and good value travel options between Winchester and Southampton
- Includes cleaning of communal areas
- All utility charges included (including contents insurance)
- Meet fellow WSA students and build your own community

YOU CAN ALSO REQUEST:

- A quieter flat
- A no-alcohol flat
- A single-sex flat
- To live with your friends (international and second, third and fourth-year students only)

VISIT ERASMUS PARK HALLS

It is just a 15 minute walk to Erasmus Park. If you wish to drive, please DO NOT follow Google Maps as it will take you to the pedestrian entrance.

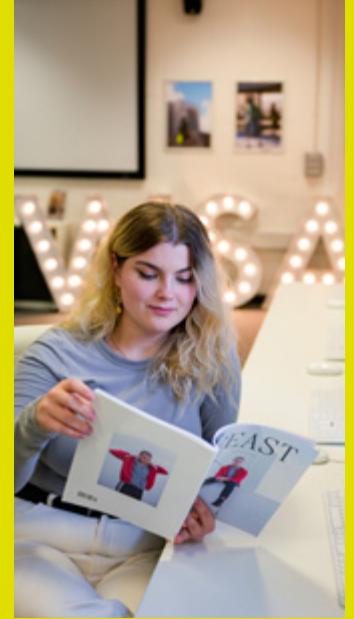
FROM WINCHESTER SCHOOL OF ART:

- Turn left on to Park Avenue and then turn left onto N walls B333, keep left at the fork.
- Follow Easton Lane, drive past the pedestrian entrance and turn left onto Moorside Road.
- Follow Moorside road around to the left and turn left when you see the Erasmus Park sign.

FROM THE M27:

- Leave the motorway at Junction 9
- At the roundabout take the Easton Lane Exit towards Winnall Industrial Estate
- At the roundabout take the second exit
- Turn right onto Moorside Road
- Follow Moorside road around to the left and turn left when you see the Erasmus Park sign.

You can park without a permit. Follow Open Day signage to the reception and common room for your accommodation tour.



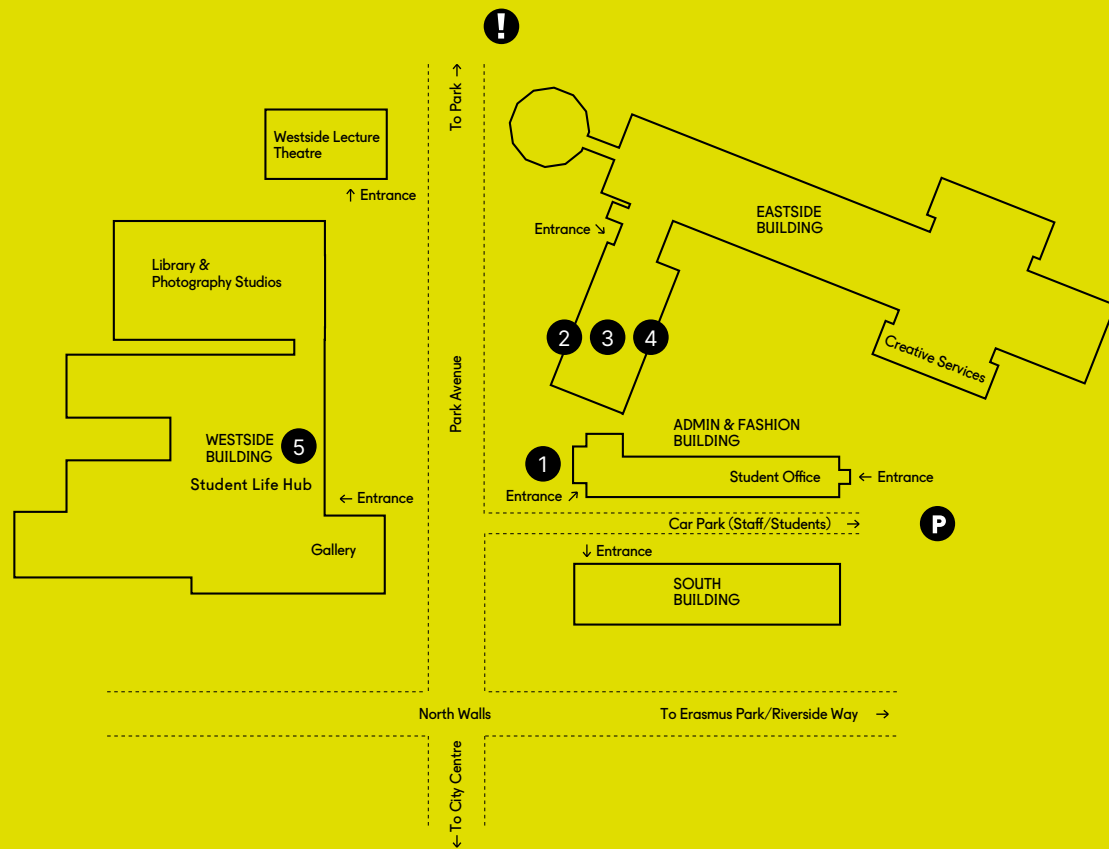
"Most of the people I still hang out with today are those who I met in halls in my first year. As a WSA student, it meant everyone at Erasmus Park was also from WSA. It created lots of opportunities to mingle, and I knew I would see them again."

NICOLE KARKUT
BA FASHION MARKETING WITH MANAGEMENT, SECOND YEAR



EXPLORE THE CAMPUS

Use this map to help you explore the campus throughout the day. Want to find out more about the facilities? Head to the information point located in the cafe. Or take a guided tour with one of our student ambassadors.



LEARN MORE ABOUT THE CAMPUS AND FACILITIES



SOUTH BUILDING

FIRST FLOOR

- PC Suite
- Games Hangar

THIRD FLOOR

- Seminar Rooms 6-10
- Quiet Room

WEST SIDE

FIRST FLOOR

- Winchester Gallery
- Seminar Rooms 1161, 1163, 1165
- MA Fine Art Studio
- Media Stores
- Mac Suite
- Creative Computing Studios / Work

SECOND FLOOR

- Library
- Fashion Studio 4
- Fine Art Studio
- Lecture Theatre A
- Motion Capture Suite

WEST SIDE LECTURE THEATRE BUILDING

- West Side Lecture Theatre

ADMIN & FASHION BUILDING

FIRST FLOOR

- Main Reception
- Student Office

SECOND FLOOR

- Student Support
- Fashion Studio 1
- Fashion Studio 3

THIRD FLOOR

- Fashion Studio 2
- EAST SIDE BUILDING

FIRST FLOOR

- Students' Union / Cafe
- Computer Centre and Mimaki Printing
- Printmaking Workshop
- MA TD Studios
- Digital Fabric Printer
- Creative Services Centre
- Textiles Dye Labs and Laundry
- E-Textiles
- 3D Printing
- Fine Art Studios / Workshops

SECOND FLOOR

- Mac Suite
- Computer Centre 1
- Assistive Technology
- Lecture Theatre B
- Fashion Marketing with Management
- SLT (Textiles) Workshops
- SLT (Textiles) Studio

THIRD FLOOR

- Graphic Communication Studios
- Seminar Rooms
- Digital Suites
- Harvard Lecture Space

1 Check-in

2 Campus Tours

3 Café

4 Information Point

5 Student Life Hub

P Parking

! Assembly Point

Winchester School of Art
University of Southampton
Park Avenue
Winchester
SO23 8DL

023 8059 6900

www.southampton.ac.uk/wsa

LEARN MORE ABOUT WSA



PARTNERED WITH WOMEN IN GAMES, UKIE, RAISE THE GAME

MEMBER OF THE UK FASHION AND TEXTILE ASSOCIATION (UKFT)

www.southampton.ac.uk/wsa

UK and EU enquiries:

enquiries@southampton.ac.uk

+44 (0)23 8059 9699

WhatsApp at +4423 8000 0512

International enquiries:

international@southampton.ac.uk

+44 (0)23 8059 2772

WhatsApp at +4423 8000 0512



@uni_southampton_wsa



@unisouthamptonwsa



@unisoton_wsa



@uni_southampton_wsa



@unisouthampton

DISCLAIMER:

This document is for information purposes only and is prepared well in advance of publication. While the University of Southampton uses all reasonable efforts to ensure that all statements, information and data contained in this document are accurate as at the date of publication, it reserves the right to make revisions or modifications to such statements, information or data at any time and without notice. Under no circumstances shall the University be liable for any reliance by the reader on any information in this document.

© University of Southampton 2024

This document can be made available, on request, as an electronic version.

Correct at date of print, September 2024