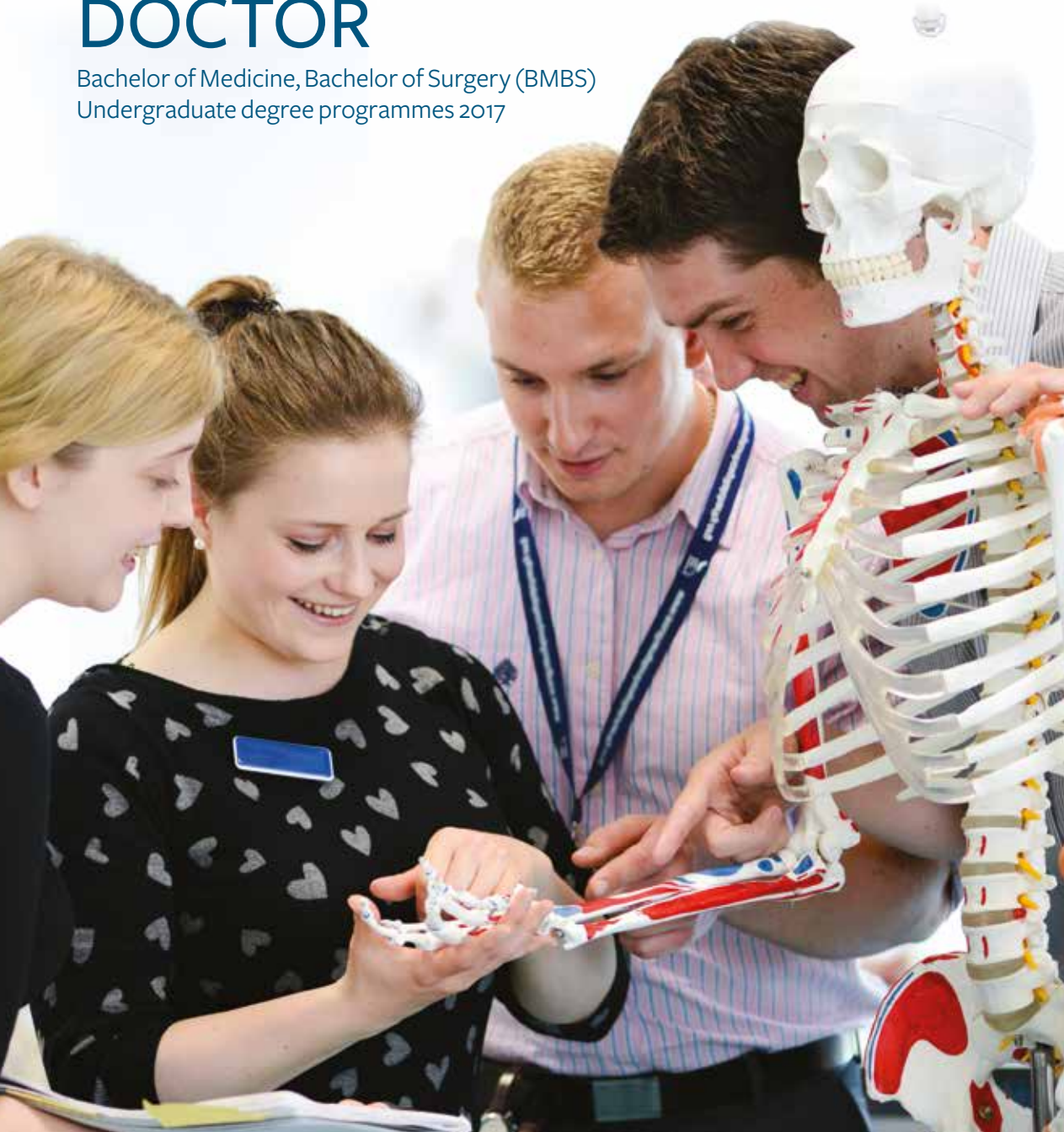


BUILD YOUR CAREER AS A DOCTOR

Bachelor of Medicine, Bachelor of Surgery (BMBS)
Undergraduate degree programmes 2017



Reach your goals at Southampton by combining your ambition, your talent and our support.

Choosing the right place to study is an important decision, with many factors to think about. Join us, an institution in the top one per cent of world universities* and a founding member of the Russell Group of research-intensive UK universities. At Southampton you are taught by world-leading academics on courses that are designed to meet your needs as a medical student.

Whether you aim to become a general practitioner, hospital doctor, surgeon, or follow another route, we give you the best possible preparation for your future career, along with a fantastic student experience in a vibrant, diverse environment.

As a thriving and ambitious multidisciplinary Faculty, we are a national leader in medical education. We hold an international ASPIRE Award of Excellence in Student Engagement and we have an outstanding reputation for our combined expertise in research and teaching.



CHOOSE SOUTHAMPTON

Contents

- 04 Choose Southampton
- 16 Your student experience
- 22 Medicine overview
- 24 Course information
- 34 Applying and funding
- 35 International students
- 38 How to find us

*QS World University Rankings, 2016/17

CHOOSE SOUTHAMPTON: A GLOBAL UNIVERSITY

The city of Southampton has a history of innovation and exploration. As a forward-thinking university, we uphold these values in our education and research; join us to forge your successful future.

- Our 200,000 graduates are part of a network of professionals that covers 180 countries
- Our academics make a difference on every continent
- Our business, government and non-government organisation partners span the globe
- We are part of the Worldwide Universities Network, a collaboration of knowledge from around the world
- We developed a new Bachelor of Medicine programme for European students – the first of its kind between a UK university and a European healthcare provider

We are an institution in the **TOP 1%** of global universities



SUPPORTING CARE FOR INFANTS

Our diagnostic programme successfully diagnoses 95% of neonatal diabetes, supporting care for infants all over the world

The European Bachelor of Medicine programme is a joint venture with a German healthcare provider. On this programme students study in Southampton before transferring to Germany



MEETING WORLD HEALTH CHALLENGES

We collaborate with the World Health Organization (WHO) to develop and evaluate new ways of meeting the major health challenges facing the world

We have over **400** links with **233** partners in **54** countries around the world

TACKLING EVEREST

Professor Mike Grocott performs research on Mount Everest Base Camp to better understand oxygen deficiency in the human body

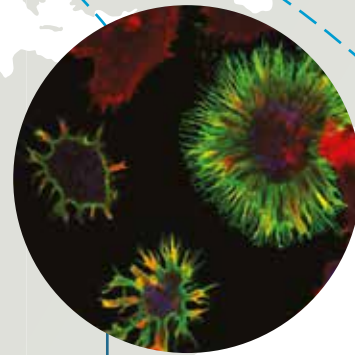


IMPROVING HEALTH IN CHINA

Southampton researchers are helping a United Nations' Population Fund programme to improve the reproductive health of millions of young people in China



We are working as part of an international team to develop a new community-based intervention to improve the diet and lifestyle of young married couples in an urban area near Kuala Lumpur, Malaysia



LEADING CANCER IMMUNOTHERAPY TREATMENTS

Our scientists are leading a team of international experts to help the fight against the most difficult to treat cancers

Each year, students from the International Medical University in Malaysia and the University of Brunei Darussalam join our Bachelor of Medicine programme

STUDY ABROAD

Our students undertake elective placements across the world from America to Australia, Africa to SE Asia. Medical student Jessica Tinsley undertook her elective placement within an Acute Medical Unit in Sydney, Australia





WHAT'S YOUR **AMBITION?** TO BECOME A PAEDIATRIC SURGEON

Sophie Lewis
Final year BM5 student

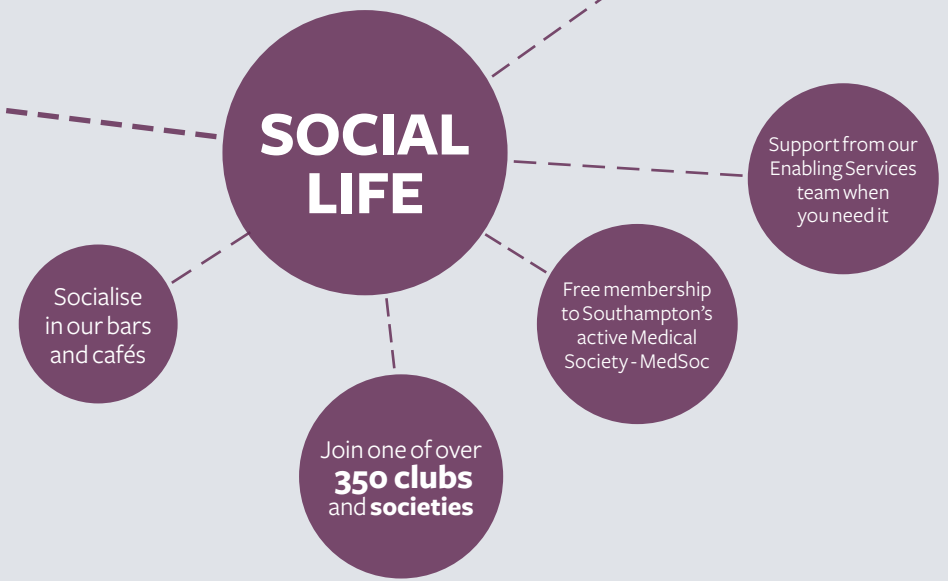
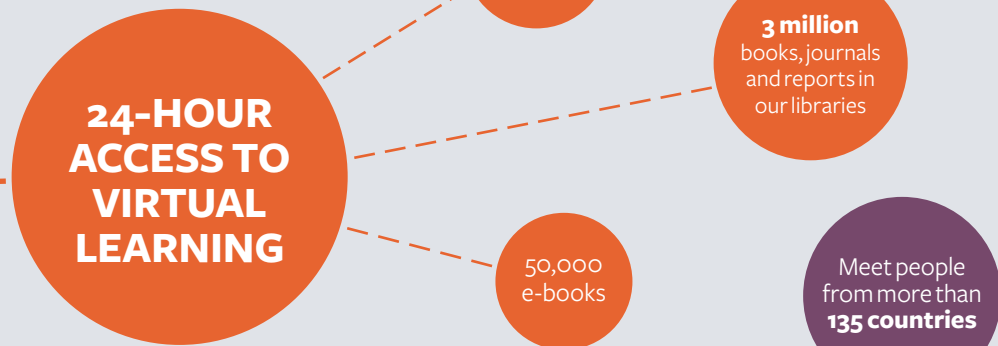
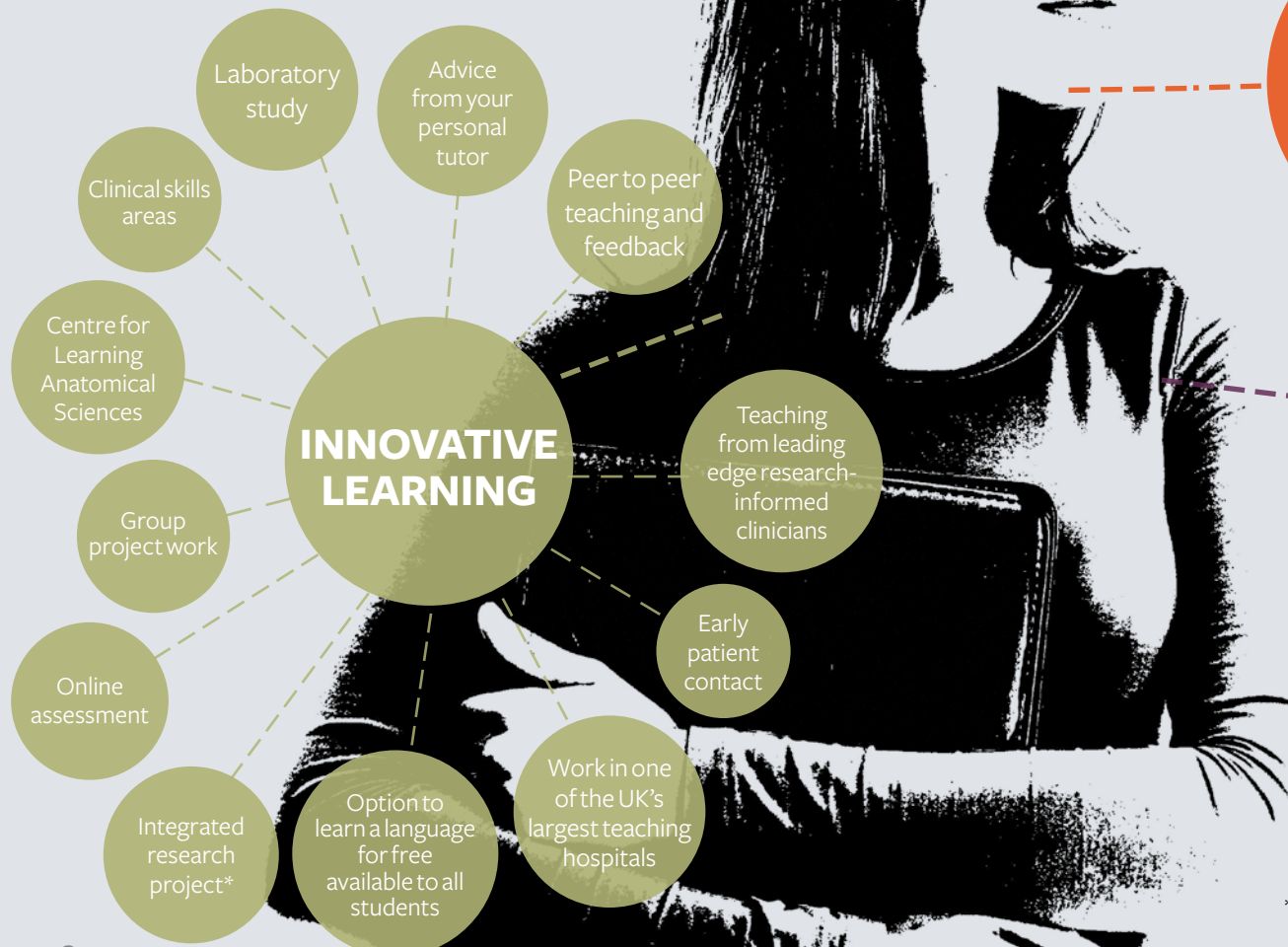
“Southampton has pushed me out of my comfort zone and helped me grow in confidence so I can take on the opportunities and challenges of a long term career in medicine.”

“Being able to see a triple bypass and a birth has made me appreciate how lucky I am to study here and cemented my passion to follow a paediatric career path. One of the many opportunities I've taken advantage of to enhance my CV is to develop a ‘Teddy bear hospital’ which I took into schools to take away the fear that children may have of going to see the doctor.”

CHOOSE SOUTHAMPTON: DEVELOP YOUR OWN EDUCATION

Your courses are developed and taught by world experts

- ➔ Grow in independence and shape your own student experience
- ➔ As well as attending lectures and seminars, you can access many lectures and learning resources on the move
- ➔ Work with us as we continually develop and improve our programmes
- ➔ Our degree programmes are shaped and delivered by leading, research-informed clinicians and scientists
- ➔ Take advantage of the many extra-curricular activities that the University offers
- ➔ Southampton Medicine holds an international ASPIRE Award of Excellence in Student Engagement



*With the exception of the BM4 programme

OUR PEOPLE

Southampton people have a passion to change the world through their research and collaborations with global partners

- Our world-leading research informs your education
- Studying with our many clinical and scientific academics gives you the edge
- You are involved with important research as it unfolds
- Our staff are enthusiastic to develop our programmes so you succeed
- Join us and share our knowledge to gain your advantage



PROFESSOR KAREN MORRISON

Karen is Associate Dean for Education and Student Experience, and Director of Medical Education, overseeing all the Medicine programmes in the Faculty. She is also Professor of Neurology and a clinical neurologist, specialising in the care of people with motor neurone disease, MND. Her laboratory research focuses on molecular genetic mechanisms in neurodegeneration.

Karen is enthusiastic in ensuring that our Medicine programmes continue to evolve, so that we graduate highly competent, caring and resilient doctors for the future.



PROFESSOR KAREN TEMPLE

Karen is Head of the Academic Unit of Human Development and Health and co-lead of the Wessex Genome Medicine Centre. She is an academic dysmorphologist and has identified new genetic imprinting syndromes, including Temple syndrome as clinical lead for the Wessex Imprinting Group.

Her long standing research into the (epi)genetic causes of transient neonatal diabetes changed treatment of the condition.



PROFESSOR DIANA ECCLES

Professor of Cancer Genetics, Head of the Academic Unit of Cancer Sciences and past director of the University of Southampton Clinical Trials Unit, Diana is also the Chief Investigator for a large national cohort study which has recruited over 3,000 young women with breast cancer and collaborates in international studies to understand the role of inherited genetic mutation in breast cancer risk and prognosis.



PROFESSOR ROBERT READ

Robert is Head of the Academic Unit of Clinical and Experimental Sciences, Professor of Infectious Diseases and Honorary Consultant Physician to Southampton University Hospitals. Robert conducts major clinical trials of new meningitis vaccines and chairs the postdoctoral fellowship panel for the National Institute for Health Research.



PROFESSOR PAUL LITTLE

Professor of Primary Care Research, Paul works to improve patient wellbeing by changing behaviours. He has run many successful clinical trials and is developing internet-based behavioural support to improve the care of patients in several areas such as obesity, back pain, cancer survivorship and nutrition. He was the first GP to be awarded a Wellcome HSR Training Fellowship and an MRC Clinician Scientist Fellowship.

CHANGE THE WORLD

The University of Southampton leads the UK in cancer immunology research. Building on this unrivalled expertise, we are raising £25m to open the UK's first dedicated Centre for Cancer Immunology.

We are on the cusp of exciting breakthroughs in the race to cure cancer. Our groundbreaking immunology research is enabling the body's immune system to recognise and eradicate cancer cells. We are seeing some amazing results in clinical trials, with as many as half of our patients with difficult and terminal cancers, including lung and skin cancer, showing dramatic improvements. In fact, our immunotherapy treatments are proving so powerful they can last a lifetime.

Our planned state-of-the-art Centre, the first of its kind in the UK, will connect world-leading specialists with cutting-edge facilities in a dedicated, interdisciplinary hub. The new Centre will increase the intensity and scope of cancer research and enable a step change in the number of cancer immunology clinical trials taking place nationally.

The new Centre is due to open at Southampton General Hospital in 2017.

"We are starting to see unprecedented success. Our new vaccines and antibodies direct special immune cells against cancers. These 'killer' cells can control and shrink cancer and give long-lasting protection."

Professor Peter Johnson CBE

Professor of Oncology

CANCER BREAKTHROUGHS

Our research is enabling the body's immune system to seek out and destroy cancer cells

FIRST IN THE UK

We are opening the UK's first dedicated Centre for Cancer Immunology

RESEARCH FOR PATIENT BENEFIT

Our new Centre will increase national cancer immunology clinical trials

Further information

To find out more about our campaign for the Centre for Cancer Immunology

www.southampton.ac.uk/youreit

TEACHING & LEARNING

All medical students are allocated a Personal Academic Tutor and Senior Tutor on arrival who will help you to settle in and obtain the help and support you need. Academic and administrative staff are also available to assist students with day to day issues.

Support for students

The University Student Services Centre provides advice and information for students on issues such as fees and accommodation. Support is also provided for students with specific learning difficulties such as dyslexia, and the University also offers a wide range of support services.

For more information visit the University website www.southampton.ac.uk/studentservices

Facilities

Throughout your training you will have access to a full range of University facilities. These include the well-resourced Centre for Learning Anatomical Sciences and Clinical Skills Centre at Southampton General Hospital. The University has several libraries including the Health Services Library.

Money matters

For information on tuition fees, living costs and financial support, including scholarships/bursaries, visit www.southampton.ac.uk/undergraduate/tuition_fees/

Students on the BM6 programme are eligible for a Year Zero bursary of £1,000 for their first year of study and may also be eligible for other University of Southampton bursaries – see website above.

For information on medical student finance, and to check eligibility criteria for NHS bursaries during medical training, please see www.nhsbsa.nhs.uk and www.bma.org.uk. When planning your finances, it is important you consider other expenses that may be associated with your course. Please visit our website for details of any additional costs www.southampton.ac.uk/medicine/undergraduate/fees_and_funding.page

Applicants with a disability, condition or health problem

The University of Southampton has been closely involved with The Gateways Disability Project which has seen the General Medical Council joining forces with 11 medical schools to develop guidance on encouraging people with disabilities into medicine and continues to actively support applicants with disabilities who wish to pursue a career in Medicine.

The objective of the project has been to develop advice for medical schools on supporting disabled students into medicine and retaining them within the profession. The guidance produced provides practical suggestions to help medical schools ensure that disabled students do not face unnecessary barriers to successful medical careers. For further details please visit www.gmc-uk.org/education/undergraduate/gateways_guidance.asp

We have a special responsibility to ensure that all students admitted to the BMBS programmes will be eligible for registration by the General Medical Council upon graduation. It is important to us that our students are able to fulfil the rigorous demands of professional fitness to practice.

Students who are made an offer and who indicate on their UCAS form that they have a disability will be referred to the University's Enabling Services as part of the admissions process to ensure that the University is able to offer the appropriate systems of support. Any disability disclosed on your UCAS form will not be used as part of the selection process.

Both your offer and continued registration on the programme will be conditional upon the completion of satisfactory health screening. Health screening is assessed in confidence by staff in the Occupational Health Department at University Hospital Southampton. Applicants with serious communicable diseases or conditions, or with mental health (including eating disorders) or behavioural difficulties will need to inform Occupational Health via the confidential health screening process.

In line with recent guidance, blood borne virus (BBV) testing will be performed during the initial stages of medical training, prior to undertaking any Exposure Prone Procedures (EPPs). Freedom from infection with BBVs is not an absolute requirement for those wishing to train as doctors, however satisfying additional health clearance, which includes determining their BBV status, is obligatory for those who wish to train in specialties that involve EPPs. For further information, please visit www.medschools.ac.uk/News/Pages/Health-clearance-for-HepatitisB-HepatitisC-HIV-and-Tuberculosis.aspx

Applicants with learning difficulties

The University of Southampton welcomes applicants who indicate on their UCAS form that they have a specific learning difficulty, such as dyslexia; this information is not taken into consideration as part of the selection process. If you indicate on your UCAS form that you are dyslexic you will be asked to register with Enabling Services at the University so that appropriate special arrangements, such as extra time in examinations, can be made. www.southampton.ac.uk/edusupport

“I was diagnosed with dyslexia at the age of 10. The University of Southampton has a fantastic Enabling Service to support you throughout medical school, whether it be with exams, learning, emotional support or any complications that students come across.”

Meera Gondhia
BM6 student



YOUR STUDENT EXPERIENCE

Our six campuses all offer a friendly, vibrant and diverse atmosphere for work and leisure. As a student you will spend the majority of your first two years at our Highfield Campus and Southampton General Hospital. BM4 students spend a significant amount of time at the Royal Hampshire County Hospital in Winchester and North Hampshire Hospital in Basingstoke.

Campuses

Highfield Campus caters for most of our academic courses. Incorporating state-of-the-art research and teaching facilities, it boasts new and refurbished student facilities such as the University of Southampton Students' Union, and the Jubilee Sports Centre.

Southampton General Hospital is home to University Hospital Southampton NHS Foundation Trust and is a major centre for teaching and research in association with the University.

The Royal Hampshire County Hospital in Winchester provides the full range of general hospital services, and is used as a clinical base for our BM4 students.

Avenue Campus houses a state-of-the-art purpose-built £3m Archaeology Building and is located on the edge of Southampton Common, a short walk from Highfield.

The University's collaboration with Lloyd's Register represents one of the largest business partnerships with any single university in the world. Our new £116 million Boldwood Campus is the result of this partnership and is home to the Southampton Marine and Maritime Institute.

The National Oceanography Centre Southampton is our waterfront campus and is one of the world's leading research centres for the study of ocean and earth sciences.

Winchester School of Art is located 12 miles north of Southampton, in Winchester city centre.

Our branch campus for engineering is in EduCity, Iskandar in Malaysia and benefits from innovative world-class facilities for engineering and full access to the learning resources at our UK campuses.

Social life

Run by students for students, the University of Southampton Students' Union, offers a wide range of services and opportunities for you to get the most out of your free time.

- Experience Your Freshers' – a week full of activities to help you settle in
- Discover a new talent: try some of our 92 sports clubs from archery to Taekwondo
- Join one of our 218 societies including MedSoc and WAMSoc (Widening Access to Medicine Society)



03



You can socialise with friends in one of our bars or cafés on campus and in our halls of residence, as well as in the city of Southampton

04



02



01

- 01 Southampton General Hospital
- 02 Building 85, Highfield Campus
- 03 Well-equipped kitchens
- 04 The Bridge Bar
- 05 Try Taekwondo



05

Accommodation

Get the best out of your student life; stay in one of our 6,500 student rooms in halls. You can choose from a range of room types that includes a new development of over 1,400 rooms in Southampton city centre.

Live in either self-catered halls of residence with well-equipped communal kitchens, or part-catered accommodation where you enjoy the benefits of breakfast and evening meals throughout the week, plus some other meals at the weekend.

If you are a registered first-year undergraduate student new to the University, starting a full-time course, with no dependents, you will be guaranteed an offer of halls accommodation as long as you fulfil the full criteria of the guarantee, which includes applying before 1 August.

To uphold the guarantee, in years of exceptional demand we may offer accommodation in a twin shared room at the start of the academic year for a short, temporary period of time.

For more information on our guarantee to you, visit www.southampton.ac.uk/guarantee

- Help local people: get involved in community volunteering projects and fundraising
- See high-profile acts, such as Pixie Lott and Greg James
- Catch a film in our 330-seat cinema
- Dance the night away in our large venue for big events and gigs
- Become a DJ or director at Surge Radio and SUSUtv
- Try out journalism for the Wessex Scene or The Edge magazines
- MedSoc is the student medical society at the University. It has an active committee to support you throughout your time here, whether that is helping you settle in, meeting new people, joining clubs and societies or with your academic work.

CHOOSE SOUTHAMPTON: SHAPE YOUR FUTURE

A medical degree from Southampton prepares you for a lifelong career in a rapidly-changing NHS and opens doors to a wide range of opportunities

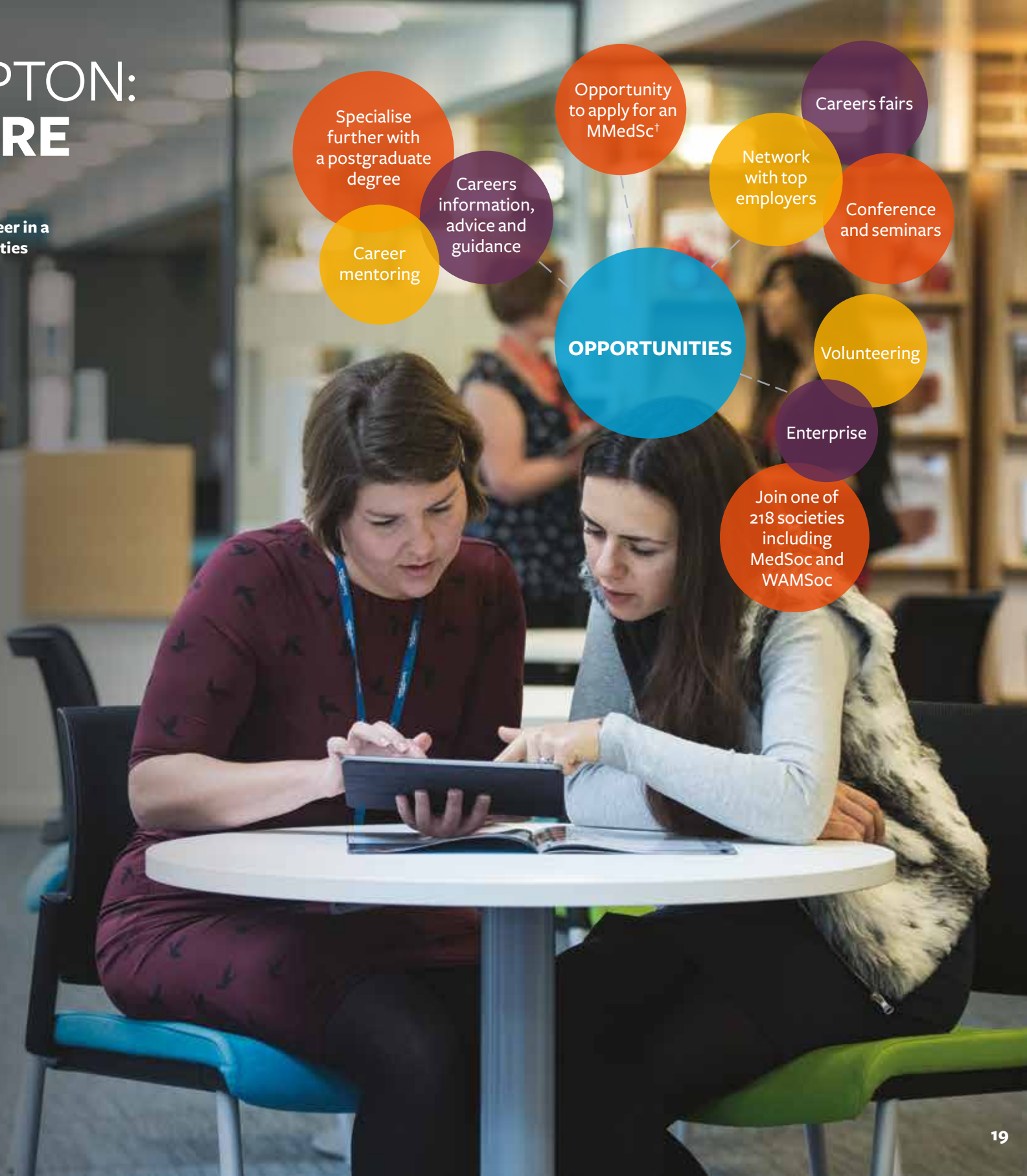
Southampton fast-tracks your ambitions

- ➔ We prepare you for future challenges not yet imagined and career paths not yet thought of
- ➔ We rank 8th in Clinical Medicine* and 2nd in Public Health and Primary Care**
- ➔ We offer practical experience from the very beginning, having patient contact in a variety of clinical settings from the first few weeks
- ➔ Your degree will support you in gaining employment in the NHS and the Foundation Programme*** (a two-year training programme for newly qualified doctors)
- ➔ If you successfully complete our BM6 or BM5 programmes you will leave with two degrees (BMedSc and BMBS) and the opportunity to apply for our Masters in Medical Science degree (MMedSc)

Our graduates go on to practice medicine in a wide range of careers including:

- | | |
|-------------------------------|---------------|
| Accident and Emergency | Orthopaedics |
| Anaesthetics | Paediatrics |
| The Armed Forces | Pathology |
| General Practice | Public health |
| Gynaecology | Psychiatry |
| Hospital medicine specialties | Radiology |
| Medical research | Surgery |
| Obstetrics | |

* Based on intensity-weighted research power in the latest Research Excellence Framework (REF2014)
 ** Based on intensity-weighted grade point average in the latest Research Excellence Framework (REF2014)
 *** For information about the Foundation Programme see page 31
 † With the exception of the BM4 accelerated programme



WHAT'S YOUR **AMBITION?**

TO TACKLE PUBLIC HEALTH INEQUALITIES
AND MAKE A CHANGE FOR THE BETTER

Jahangir Alom

Fourth year BM6 student
MedSoc President 2016/2017
Founder of WAMSoc (Widening Access to Medicine Society)

“Southampton’s BM6 programme offered me the independence I wanted alongside the support I needed to take full advantage of the wide range of educational and social opportunities available here.”

“Taking an elective placement in Bangladesh has enabled me to explore comparisons between very different public healthcare systems, but also provided a platform from which to build the necessary leadership skills I will need to make my career count.”



MEDICINE OVERVIEW

Choose Southampton

- 92 per cent of our students are satisfied or very satisfied with overall quality (National Student Survey 2015)
- We hold an international ASPIRE Award of Excellence in Student Engagement
- Clinical experience from year one in a research-intensive medical university
- Our integrated approach will help you develop the skills of a doctor, as a scholar, professional and practitioner
- Upon graduation from our BM5 and BM6 programmes you will also be awarded a Bachelor of Medical Sciences degree
- BM5 and BM6 students will have the opportunity to apply to study an integrated classified honours masters (MMedSc) degree by taking an additional year of study

93%

of our students are satisfied or very satisfied with our teaching –
National Student Survey 2015

95%

of our students are satisfied or very satisfied with our learning resources –
National Student Survey 2015

The University of Southampton Faculty of Medicine is a thriving and ambitious multidisciplinary community, dedicated to scholarship, discovery and enterprise. We are a national leader in medical education, with an outstanding reputation for our combined expertise in research and teaching.

We have four Bachelor of Medicine and Bachelor of Surgery (BMBS) programmes. BM5 is the standard five-year programme. If you already have a degree, our four-year BM4 programme will allow you to draw on your existing knowledge and experience as you begin your training as a doctor. If you are able to meet our eligibility criteria, specifically designed to widen access to medicine, our BM6 six-year programme may be the right degree for you.

Information regarding our fourth programme, the BM(EU), can be found at www.ksm-info.de. Applications are made through the Kassel School of Medicine.

Upon graduation from our BM5 and BM6 programmes, as well as a Bachelor of Medicine, Bachelor of Surgery (BMBS) degree, you will be awarded a Bachelor of Medical Science (BMedSc) degree. As a successful BM4 graduate you will gain a Bachelor of Medicine, Bachelor of Surgery (BMBS) degree.

Once you have successfully completed your programme, you can register provisionally with the General Medical Council (GMC) and apply for employment in the NHS and the Foundation Programme, a two-year training programme for newly qualified doctors. For information about the Foundation Programme see page 31.

Our BMBS degrees are the equivalent of MBBS and MBChB, and are recognised by the GMC in line with all other medical qualifications from UK medical schools.

Career paths

Whether you choose to become a general practitioner, hospital doctor, surgeon, or follow another route, our degrees represent the first stage in a rewarding career as a doctor. Each programme provides a comprehensive and balanced curriculum to enable you to develop the knowledge, skills and professional attitudes and behaviours that you will need as a newly qualified doctor.

Enhancing student experience

You will gain practical experience from the very beginning, having contact with patients in a variety of clinical settings and in varying roles from the first few weeks of beginning the BM5 and BM4.

You will continue to build your clinical expertise through clinical placements, developing your skills in the community and in NHS Trust hospitals across southern England.

As a medical student, you will be able to take advantage of opportunities for multi-professional learning, which will be essential as you prepare to join the healthcare teams of the future.

Teaching and assessment

All students are allocated a Personal Academic Tutor as well as access to Senior Tutors where necessary. A range of learning and web-based resources are available to support you in your academic work.

Further information

For more details about our courses visit www.southampton.ac.uk/medicine

BM5 A100 BACHELOR OF MEDICINE, BACHELOR OF SURGERY AND BMEDSC

FIVE-YEAR PROGRAMME

- Integrated, systems-based method of teaching
- Clinical work from the first few weeks of the programme
- Opportunity to work with other health professionals
- An in-depth research project
- Clinical apprenticeship

Course overview

Our integrated, systems-based BM5 and BMedSc programme is distinctive in many ways. You will learn from contact with patients in a variety of clinical settings, beginning in the first few weeks of your course; and in Year 2 you will undertake a weekend shift placement as a Healthcare Assistant to gain insight into multi-professional team working in hospitals.

We provide many opportunities for medical students to work and learn alongside other health professional students during their clinical placements.

Course content

In the first two years you will learn about the major physiological systems of the body, and integrate your learning in a clinical context. You will also undertake student selected units.

In year three you will carry out an in-depth research study, choosing a research topic from a wide variety of disciplines, followed by clinical placements in hospitals and general practice. On successful completion of this year you will be awarded a Bachelor of Medical Sciences (BMedSc) award.

In year four you will undertake placements in a range of clinical specialities and, in your final year, gain experience in a wide range of hospitals, communities and general practice, with an opportunity to complete an elective placement.

Programme structure

Year one | Core modules

- Foundations of Medicine
- Medicine in Practice 1
- Nervous & Locomotor 1
- Respiratory, Cardiovascular & Renal 1
- Student Selected Units 1 and 2

Year two | Core modules

- Endocrinology & Life Cycle
- Gastrointestinal
- Medicine in Practice 2
- Nervous & Locomotor 2
- Research for Medicine & Health
- Respiratory, Cardiovascular & Renal 2

Year three | Core modules

- Medicine & Elderly Care
- Primary Medical Care & Long Term Conditions
- Research Project
- Scientific Basis of Medicine
- Surgery & Orthopaedics
- Student Selected Unit 3



Year four | Core modules

- Psychiatry
- Acute Care
- Specialty Weeks (Dermatology, Head & Neck, Neurology & Ophthalmology)
- Obstetrics & Gynaecology/ Genitourinary Medicine
- Child Health
- Clinical Ethics & Law

Year five | Core modules

- Surgery
- Primary Medical Care
- Medicine
- Personal Professional Development
- Assistantship
- Elective
- Student Selected Unit 4

“The first thing I found amazing about the course at Southampton was that we were introduced to clinical attachments from the first week. University Hospital Southampton provides a great teaching environment, and the campus and halls were just what I was looking for. I’m having a great time at Southampton and really feel at home here.”

Sid Mohan
BM5 student

Key information

Programme Leader:

Dr Jane Wilkinson

Start date: September

Duration: 5 years

Fees: £9,000 for UK and EU students, see www.southampton.ac.uk/uni-life/fees-funding.page

Typical offers require the following

A levels: AAA including Chemistry and Biology

GCSE: 7 GCSEs at Grade B, including Mathematics, English Language and Double Award Science (or equivalent approved by the University)

IB: 36 points, with 18 at Higher level in three subjects, to include 6 in Chemistry and Biology at Higher level

Intake: 202

Average applicants per place: 7

Language requirements: IELTS 7.0 overall, with a 7.0 in each component

Selection process: UCAS application, UKCAT and Selection Day

Please see the entry requirements for this programme on page 32/33.

Entry requirements may be subject to change. Before you apply, please visit www.southampton.ac.uk/entryreq

Career opportunities

See page 18

Find out more

T: +44 (0)23 8059 4408

E: ugapply_fm@southampton.ac.uk

southampton.ac.uk/medicine

BM4 A101 BACHELOR OF MEDICINE, BACHELOR OF SURGERY

FOUR-YEAR GRADUATE ENTRY PROGRAMME

- Four-year programme
- Explicit links to clinical topics from year one
- Clinical work from the outset, in a dedicated hospital clinical base
- Regular group work in the first two years
- Clinical apprenticeship in the final year

Course overview

Our BM4 degree programme enables graduates in any subject to achieve a BMBS degree in four years, drawing on existing knowledge, skills, understanding and life experiences.

The curriculum in the first 18 months is designed around a series of clinical topics which form the framework for your learning. You will undertake clinical placements, small group work, lectures and practical sessions which directly link to each of the clinical topics.

Full time clinical attachments start after Christmas in year 2, when you will undertake placements in Medicine, Surgery and Primary Care, before joining the BM5 students for a common final two years for both programmes.

Course content

Learning outcomes considered within three levels of organisation (systems biology, individuals and population and society) are used to help structure your learning. Three themes (Communication, Diversity and Teamworking, Leadership and Patient Safety) underpin the whole of the curriculum and relate directly to medical practice.

The learning structured around clinical topics has some features in common with problem-based learning (PBL) courses. You will meet on a regular basis with other students in a Graduate Group. A substantial amount of work will take place in these groups.

The clinical sessions allow you to observe medical care related to the relevant clinical topic, and also to begin to develop your clinical skills.

Programme structure

Year one | Core modules

- Foundations of Medicine 1
- Integration of Knowledge 1
- Clinical Medicine 1

Year two | Core modules

- Foundations of Medicine 2
- Integration of Knowledge 2
- Clinical Medicine 2
- Medicine, Surgery and Primary Care

Year three | Core modules

- Psychiatry
- Acute Care
- Specialty Weeks (Dermatology, Head & Neck, Neurology & Ophthalmology)
- Obstetrics & Gynaecology/ Genitourinary Medicine
- Child Health
- Clinical Ethics & Law



Year four | Core modules

- Surgery
- Primary Medical Care
- Medicine
- Personal Professional Development
- Assistantship
- Elective
- Student Selected Unit 4

“Southampton has a unique graduate entry course with early patient contact. You acquire clinical skills early on and have the opportunity to develop these throughout the degree. Medicine is an intellectually challenging course and one where you never stop learning. I could not imagine myself doing anything else.”

Keval Shah
BM4 student

Key information

Programme Leader:

Dr Shelley Parr

Start date: September

Duration: 4 years

Fees: £9,000 for UK and EU students, see www.southampton.ac.uk/uni-life/fees-funding.page

Typical offers require the following

Degree: An upper second-class honours degree or above in any subject.

A levels: Chemistry at grade C or above. Alternatively, AS level Chemistry and Biology/Human Biology at grade C or above where Chemistry has not been taken to A2.

GCSE: A minimum of grade C in Mathematics, English Language and Double Award Science (or equivalent approved by the University).

Intake: 40

Average applicants per place: 31

Selection process: UCAS application, UKCAT, Selection Day

Please see the entry requirements for this programme on page 32/33.

Entry requirements may be subject to change. Before you apply, please visit www.southampton.ac.uk/entryreq

Career opportunities

See page 18

Find out more

T: +44 (0)23 8059 4408

E: ugapply.fm@southampton.ac.uk

southampton.ac.uk/medicine

BM6 A102 BACHELOR OF MEDICINE, BACHELOR OF SURGERY AND BMEDSC

SIX-YEAR WIDENING ACCESS PROGRAMME WITH YEAR ZERO

- Guaranteed place on BM5 and BMedSc (conditional on satisfactory completion of year zero)
- Placements set in a variety of healthcare settings start in week two and then occur fortnightly throughout the academic year
- Full-time course timetabled over three days
- A small-group setting, with 30 students
- Extensive tutorial and pastoral support
- All academic content relevant to the BM5 and BMedSc curriculum

Course overview

We have developed our BM6 programme to widen access into the medical profession. The course has achieved national recognition as an example of best practice. It involves studying for an extra year on a specially designed year zero before joining students on the BM5 and BMedSc programme.

You will receive extensive tutorial and pastoral support. The relatively small cohort size enables frequent opportunities for small group work and regular support and feedback on progress.

The timetabling of year zero across three days per week allows students an opportunity to carry out some part-time work in order to support their studies.

Course content

During the year zero you may expect to study two modules in Human Structure and Function and two modules in Professional Practice.

Professional Practice is based on six projects which reflect the themes of the BM5 and BMedSc programme and involve healthcare placements, and health sociology and psychology. It also includes key skills in IT, numeracy and statistics and information retrieval.

You will go out on day placement every other week usually as part of a pair or a small group. Your placement will take place in both primary and secondary care around the Southampton area.

Financial support

Students on the BM6 programme are eligible for a year zero bursary of £1,000 for their first year of study. You may also be eligible for other University of Southampton bursaries. Please visit www.southampton.ac.uk/scholarships for further details.

Eligibility criteria

You must satisfy three of the criteria listed below in order to be eligible for the BM6 programme, and you will be expected to provide documentary proof.

- First generation applicant to higher education
- Parents, guardian or self in receipt of a means-tested benefit
- Young people looked after by a Local Authority
- In receipt of a 16-19 bursary of similar grant
- In receipt of free school meals at any point in Years 10-13
- Living in an area with a postcode which falls within the lowest 20 per cent of the Index of Multiple Deprivation (authenticated by the University), or a member of a travelling family



Graduates, international applicants, and students who have previously enrolled on a higher education programme, are not eligible to apply for this programme. If you apply to the BM6 programme you will need to complete an eligibility form.

For more information about our eligibility criteria, please visit our website www.southampton.ac.uk/medicine/ug/BM6/eligibility

Further course information overleaf

“The course really eases you into university-style learning and you’ll always have people around you to help with any problems you may have adjusting to university life. The teaching is fantastic! It’s always interactive so you never get bored and you are always encouraged to aim for nothing less than your best.”

Jessica Tinsley
BM6 student

Key information

Programme Leader:
Dr Sally Curtis

Start date: September

Duration: 6 years

Fees: £9,000 for UK and EU students, see www.southampton.ac.uk/uni-life/fees-funding.page

Typical offers require the following

A levels: A level grades BBC including Chemistry and Biology

GCSE or equivalent: A minimum of five GCSEs at grades C or above, including Mathematics, English Language and Double Award Science (or equivalent approved by the University).

Intake: 30

Average applicants per place: 19

Selection process: UCAS application, Eligibility Criteria, UKCAT, Selection Day

Please see the entry requirements for this programme on page 32/33.

Entry requirements may be subject to change. Before you apply, please visit www.southampton.ac.uk/entryreq

Career opportunities

See page 18

Find out more

T: +44 (0)23 8059 4408

E: ugapply_fm@southampton.ac.uk

southampton.ac.uk/medicine

BM6 A102 BACHELOR OF MEDICINE, BACHELOR OF SURGERY AND BMEDSC

SIX-YEAR WIDENING ACCESS PROGRAMME WITH YEAR ZERO

Programme structure

Year zero | Core modules

- Professional Practice 1
- Professional Practice 2
- Human Structure & Function 1
- Human Structure & Function 2

Year one | Core modules

- Foundations of Medicine
- Medicine in Practice 1
- Nervous & Locomotor 1
- Respiratory, Cardiovascular & Renal 1
- Student Selected Units 1 and 2

Year two | Core modules

- Endocrinology & Life Cycle
- Gastrointestinal
- Medicine in Practice 2
- Nervous & Locomotor 2
- Research for Medicine & Health
- Respiratory, Cardiovascular & Renal 2

Year three | Core modules

- Medicine & Elderly Care
- Primary Medical Care & Long Term Conditions
- Research Project
- Scientific Basis of Medicine
- Surgery & Orthopaedics
- Student Selected Unit 3

Year four | Core modules

- Psychiatry
- Acute Care
- Specialty Weeks (Dermatology, Head & Neck, Neurology & Ophthalmology)
- Obstetrics & Gynaecology/ Genitourinary Medicine
- Child Health
- Clinical Ethics & Law

Year five | Core modules

- Surgery
- Primary Medical Care
- Medicine
- Personal Professional Development
- Assistantship
- Elective
- Student Selected Unit 4



OUTCOME OF THE COURSE

At the end of the undergraduate course you will receive your BMBS (or equivalent) degree, which is a primary medical qualification (PMQ). Holding a PMQ entitles you to provisional registration with the General Medical Council, subject only to its acceptance that there are no Fitness to Practise concerns that need consideration. Provisional registration is time limited to a maximum of three years and 30 days (1125 days in total). After this time period your provisional registration will normally expire.

Provisionally registered doctors can only practise in approved Foundation Year 1 posts: the law does not allow provisionally registered doctors to undertake any other type of work. To obtain a Foundation Year 1 post you will need to apply during the final year of your undergraduate course through the UK Foundation Programme Office selection scheme, which allocates these posts to graduates on a competitive basis. All suitably qualified UK graduates have found a place on the Foundation Year 1 programme, but this cannot be guaranteed, for instance if there were to be an increased number of competitive applications from non-UK graduates. Successful completion of the Foundation Year 1 programme is normally achieved within 12 months

and is marked by the award of a Certificate of Experience. You will then be eligible to apply for full registration with the General Medical Council. You need full registration with a licence to practise for unsupervised medical practice in the NHS or private practice in the UK.

Although this information is currently correct, students need to be aware that regulations in this area may change from time to time.

There is some discussion about whether to remove provisional registration for newly qualified doctors. If this happens then UK graduates will receive full registration as soon as they have successfully completed an BMBS (or equivalent) degree. It should be noted that it is very likely that UK graduates will still

need to apply for a training programme similar to the current Foundation Programme and that places on this programme may not be guaranteed for every UK graduate.

The GMC is currently considering a formal assessment that UK medical graduates would need to pass in order to be granted registration with a licence to practise. Although no final decision has been taken as to whether or when such an exam will be introduced applicants should be aware that the GMC envisages that future cohorts of medical students may need to pass parts of a medical licensing assessment before the GMC will grant them registration with a licence to practise.

[Find out more
www.gmc-uk.org](http://www.gmc-uk.org)

ENTRY REQUIREMENTS

Please read the selection process section on our [How to Apply webpage](#): www.southampton.ac.uk/medicine/undergraduate/apply.page in conjunction with the information below.

Academic entry requirements

Qualifications which the University considers to be an equivalent standard may be accepted. Please contact the Medicine Admissions Office for further information or see our website.

BM5 A100 BACHELOR OF MEDICINE, BACHELOR OF SURGERY AND BMEDSC FIVE-YEAR PROGRAMME

A levels: AAA, including Chemistry and Biology. General studies and critical thinking are not accepted. Subjects with material that overlaps (e.g. Human Biology/Sports Studies/Physical Education) may not be offered in combination at A2 level.

GCSEs: A minimum of seven GCSEs at grade B, including Mathematics, English Language and Double Award Science (or equivalent approved by the University).

Mature non-graduate applicants

(Non-graduate applicants over the age of 21)

A levels: AAA, including Chemistry and Biology. If you are offering nursing qualifications, you must also offer at least two A levels at grade A, to include Chemistry and Biology.

GCSEs: A minimum of grade C in Mathematics, English Language and Double Award Science (or equivalent approved by the University).

Graduate applicants

Degree: An upper second-class honours degree or above in any subject. For further information about your first degree see the entry requirements for our BM4 programme.

A levels: Chemistry at grade C or above. Alternatively, AS level Chemistry and Biology/Human Biology at grade C or above where Chemistry has not been taken to A2.

GCSEs: A minimum grade C in Mathematics, English Language and Double Award Science (or equivalent approved by the University).

BM4 A101 BACHELOR OF MEDICINE, BACHELOR OF SURGERY FOUR-YEAR GRADUATE ENTRY PROGRAMME

Graduate applicants may also apply for the BM5 programme.

Degree: An upper second-class honours degree or above in any subject.

A levels: Chemistry at grade C or above. Alternatively, AS level Chemistry and Biology/Human Biology at grade C or above where Chemistry has not been taken to A2.

GCSEs: A minimum of grade C in Mathematics, English Language and Double Award Science (or equivalent approved by the University).

Information about your first degree

We expect graduate students to have developed effective study and academic skills which will enable you to complete an accelerated medical programme. This includes the ability to think critically.

Every graduate, whether with an arts or science degree, brings a unique set of knowledge, skills and understanding to the programme. For example, graduates with science, arts and humanities degrees will share their knowledge and understanding in the discussion of an individual patient's experience of illness from a range of different but equally valuable perspectives.

All graduates for the BM4 and BM5 programmes are selected on the basis that they will have sufficient science knowledge and understanding to cope with their studies, and the science requirements are identical.

BM6 A102 BACHELOR OF MEDICINE, BACHELOR OF SURGERY AND BMEDSC SIX-YEAR WIDENING ACCESS PROGRAMME WITH YEAR ZERO

Please note: you must fulfil all the entry requirements detailed below and the eligibility criteria on pages 28 and 29 in order to be eligible for the programme. Applicants may also apply for the BM5 programme.

A levels: A level grades BBC including Chemistry and Biology. Subjects with material that overlaps (e.g. Human Biology/Sports Studies/Physical Education) may not be offered in combination at A level. General studies and critical thinking are not accepted.

GCSEs: A minimum of five GCSEs at grades C or above, including Mathematics, English Language and Double Award Science (or equivalent approved by the University).

Other entry requirements

UK Clinical Aptitude Test (UKCAT)

The UKCAT focuses on exploring your cognitive powers, as well as other attributes considered valuable for healthcare professionals.

All applicants to our programmes are required to take the UKCAT in the summer prior to making an application.

The UKCAT results are only valid for applications to universities in the year in which the test is taken. If your application to medical school is not successful and you re-apply the following year, you will be required to re-sit the UKCAT.

For further information regarding how the score is used, please visit www.southampton.ac.uk/medicine. For further information on the UKCAT please visit www.ukcat.ac.uk

Non-academic entry requirements

In addition to academic entry requirements, during the selection process you will be assessed against

our non-academic criteria published on our website

www.southampton.ac.uk/medicine

Applicants must be able to show they:

- Are self-motivated and resilient
- Have reflected on and learnt from life experiences (this may include, work experience, paid employment and personal experiences both in and outside health and social care settings)
- Can communicate effectively
- Are able to interact successfully with others
- Can demonstrate an understanding of the values of the NHS constitution

EU and international applicants

EU and international applicants are expected to fulfil the same academic and non-academic criteria as home applicants, and you can do so through a wide range of qualifications. Please note that international applicants are not eligible to apply for the BM4 or BM6 programmes.

APPLYING AND FUNDING

We realise that going to university is a significant investment, so we'll ensure you have all the information you need to make an informed decision.

The selection process

No more than four choices from the possible five available through UCAS should be used for medicine programmes. The remaining choices can be used for alternative courses (without prejudice to your application) when applying to Southampton. You may apply for more than one of our BMBS programmes (e.g. BM5 and BM6, or BM4 and BM5), but these would count as two choices for medicine.

For full details of the UCAS application process please visit www.ucas.com. Please note there is an application fee.

Details of our selection process can be found at www.southampton.ac.uk/medicine.

Conditions of any offer made

All applicants are selected with the aim that they will be able to fulfil the duties of a doctor as stated by the GMC in their document *Good Medical Practice* (available at www.gmc-uk.org).

Continued registration on the programme is conditional on satisfactory health screening and Disclosure and Barring Service Checks (DBS). The health screening is assessed in confidence by staff in University Hospital Southampton.

Criminal convictions

If you have any prior charges or criminal convictions you must declare this information on your application form; this includes both spent and unspent convictions, and also cautions and warnings. We may seek further information in line with the GMC guidelines, as stated in their document

Medical students: professionalism and fitness to practice (available at www.gmc-uk.org/education/undergraduate/studentftp.asp).

Age

Due to early clinical contact, students must be a minimum of 18 years of age when they start our medical degree programmes. Applicants who apply but would be under 18 at the start of the programme may be considered for a deferred place or advised to reapply as appropriate.

Tuition fees and funding

The University will set fees for 2017/18 when the government establishes limits for tuition fees. For 2016/17, the University set the tuition fee for UK and EU students at £9,000 and we offer a large number of generous fee waivers and bursaries for eligible students.

Your tuition fee may cover compulsory course costs, such as field trips and laboratory clothing; however a contribution may be necessary towards certain elements.

In the first instance, please see the Additional Costs section at www.southampton.ac.uk/medicine/undergraduate/fees_and_funding.page

Please check with the Admissions team for more details.

Visit our website for the latest information on tuition fees before you submit your UCAS form for entry in the 2017/18 academic year. Students who have applied for a deferred place in 2016/17 will be eligible for the 2017/18 tuition fees and support.

If you are a UK or EU student you may be able to apply for loans to help pay for both

fees and maintenance. For more details, visit www.southampton.ac.uk/money

Channel Islands/Isle of Man student fees

Fees are set by the islands' governments and UK universities are notified of the levels in the spring prior to the academic session in which students commence their programme of study.

International student fees for 2017

First- and second-year Medicine: £19,725 per year. Third-, fourth- and fifth-year Medicine: £40,230 per year.

Fixed fees

International students commencing their programme of study in 2017 will pay the same fixed fee for each year of their programme, with the exception of programmes where a combination of clinical and non-clinical fees apply. In these instances, the non-clinical fixed fee will apply for years one and two, and the clinical fixed fee will apply for the remainder of the programme.

 Find out more www.southampton.ac.uk/fees

T: +44 (0)23 8059 4732

E: admissions@southampton.ac.uk

INTERNATIONAL STUDENTS

Join us and students from more than 135 different countries at Southampton.

Living and studying in a different country has its own unique challenges. We make student entry straightforward, offer attractive scholarships to eligible applicants, help you settle into your new life and advise you on all aspects of living in the UK.

Our network of services and advisors ensure that your studies and life at Southampton is as productive and stress-free as possible.

International Office

Staff from our International Office attend educational exhibitions around the world as well as making numerous visits overseas and to colleges in the UK. If you are unable to visit us in Southampton, make sure you book an appointment to meet us at one of the exhibitions or join us on a virtual open day.

You will find a quick introduction to the University on our website, which is available in other languages. You can also view web pages with specific information for students from over 50 countries.

To join us on a virtual open day, visit www.southampton.ac.uk/virtualopenday

Welcome Programme

In September each year, we arrange Welcome Programme, which helps you settle into life here. The week includes general events to introduce you to our facilities, subject-specific events to begin your academic induction and a range of social and cultural activities.

During the week, you will meet other undergraduate students and explore the University and the city, so that you know where to worship, relax and shop. You will also meet current international students who will be able to give you good advice.

Meet and Greet

We organise a free Meet and Greet service for all new international and EU students in September each year. Our representatives meet you at Heathrow or Gatwick Airport and transport you directly to your accommodation. You can register for both the Service and the Welcome Programme from July on our website.

English language requirements

If English is not your first language, you will need to demonstrate that you have reached a satisfactory standard in an approved English language test. We require an IELTS level of 7.0 overall with a 7.0 in each component, or an equivalent standard in other qualifications approved by the University, achieved in the past two years. For more information on general English Language requirements please visit our website.

 Find out more www.southampton.ac.uk/international

T: +44 (0)23 8059 9699

E: global@southampton.ac.uk

TRAVEL DETAILS

Southampton has excellent transport links with the rest of the UK and internationally, by road, rail, sea and air.

By road

Our Southampton and Winchester campuses are well connected to the national road network. The M3 links Southampton and Winchester directly to London. For Southampton campuses, exit the M3 at junction 14 and follow signs for Southampton (A33). Follow the A33 into Bassett Avenue and follow signs to University campuses.

For Winchester School of Art, exit the M3 at junction nine or 10 and follow signs to the campus.

The M27 is one of the major road links along the south coast of England and passes Southampton to the north. For the University, leave the M27 at junction five (Southampton Airport) and follow signs to University campuses.

Satellite navigation

When travelling by car, please use the following postcodes in satellite navigation devices:

For Southampton Highfield Campus, use **SO17 1BJ**

For Avenue Campus, use **SO17 1BF**

For the National Oceanography Centre Southampton, use **SO14 3ZH**

For Southampton General Hospital, use **SO16 6YD**

For Winchester School of Art, use **SO23 8DL**

By air

Southampton Airport is about 20 minutes from the Southampton campuses by bus or taxi. There is a full UK domestic service, as well as flights to mainland Europe, including Schiphol Amsterdam, and the Channel Islands. If you are arriving in the UK via London Gatwick or London Heathrow airports, you can reach Southampton by road, bus, coach and rail.

By bus

We run the award-winning unilink bus service that connects our Southampton campuses with all the major transport links in the city. You can buy tickets at the unilink office or you can buy tickets on the bus.

Downloadable for iPhone, the SotonBus App allows you to view bus and route information from all major bus operators in the Southampton area. With GPS positioning, you can find your nearest bus stop, plan routes and save frequently used bus stops for easy access.

By coach

National Express runs the 032 service to London Victoria Coach Station and the 203 service to London Heathrow Airport, both via the Highfield Campus.

For timetable information, visit **www.nationalexpress.com**

By rail

Southampton and Winchester are well served by mainline railway stations – Southampton Central, Southampton Airport Parkway and Winchester. Fast trains from London and Bournemouth/Weymouth stop at all three stations, and the typical journey times to London Waterloo from Southampton Central and Winchester are an hour and 20 minutes and an hour, respectively. Winchester School of Art is a 15 minute walk from Winchester train station. The unilink frequent bus service (U1), connects into the Southampton Airport Parkway and Southampton Central train services, via the University.



HOW TO FIND US



CAMPUS INFORMATION

- University buildings
- Halls of residence

TRANSPORT INFORMATION

- Airport
- Ferry terminal
- Railway station
- Coach station

Find out more
www.southampton.ac.uk/campuses

TERMS & CONDITIONS

The University's Charter, Statutes, Regulations and Policies are set out in the University Calendar and can be accessed online at www.calendar.soton.ac.uk

Terms of use

This brochure does not constitute an offer or invitation by the University of Southampton to study at Southampton. This brochure provides an overview of the University and life at Southampton, along with information about all the undergraduate programmes available at the time of publication. It is provided for information purposes only. Relevant weblinks are shown throughout the brochure. Please also consult the programme information online for further details or for any changes that have appeared since first publication of the brochure.

The information contained in the brochure, welcome guides or on our websites is subject to change and may be updated by the University from time to time to reflect intellectual advances in the subject, changing requirements of professional bodies and changes in academic staff members' interests and expertise. Changes may also occur as a result of monitoring and review by the University, external agencies or regulators.

1. Change or discontinuance of programmes

The University of Southampton will use all reasonable efforts to deliver advertised programmes and other services and facilities in accordance with the descriptions set out in the brochure, student handbooks, welcome guides and website. It will provide students with the tuition and learning support and other services and facilities so described with reasonable care and skill.

We undertake a continuous review of our programmes, services and facilities to ensure quality enhancement. We are also largely funded through public and charitable means and are required to manage these funds in an efficient and cost-effective way for the benefit of the whole of the University community. We therefore, reserve the right where necessary:

- to alter the timetable, location, number of classes, content or method of delivery of programmes of study and/or examination processes, provided such alterations are reasonable;
- to make reasonable variations to the content and syllabus of programmes of study (including in relation to placements);
- to suspend or discontinue programmes of study (for example, because a key member of staff is unwell or leaves the University);
- to make changes to our Statutes, Ordinances, Regulations, policies and procedures which we reasonably consider necessary (for example, in the light of changes in the law or the requirements of the University's regulators). Such changes if significant will normally come into force at the beginning of the following academic year or, if fundamental to the programme, will normally come into force with effect from the next cohort of students;
- to close programmes of study or to combine or merge them with others (for example, because too few students apply to join the programme for it to be viable).

If the University closes, discontinues or combines a programme of study or otherwise changes a programme of study significantly (the "Change"), the University will inform applicants (or students where relevant) affected by the Change at the earliest possible opportunity.

- a. If the Change comes into force before the University has made an offer of a place or **before** an applicant has accepted an **offer** of a place, an applicant will be entitled to withdraw his or her application, without any liability to the University, by informing the University in writing within a reasonable time of being notified of the Change.
- b. If the Change comes into force **after** an **offer** has been accepted but prior to the student **enrolling**, the student may either:
 - (i) withdraw from the University and be given an appropriate refund of tuition fees and deposits, or
 - (ii) transfer to another available programme (if any) as may be offered by the University for which the student is qualified.

If in these circumstances the student wishes to withdraw from the University and to apply for a programme at a different university, the University shall use its reasonable endeavours to assist the student.

- c. If the Change comes into force **after** a student has **enrolled**, the University will use reasonable endeavours to teach the programme out but cannot guarantee to do so. If the University cannot teach out a programme of study, it will use its reasonable endeavours to facilitate the transfer of a student to an equivalent programme for which the student is qualified and which has places available within the University or at a different university.

2. Changes to services or facilities

The University will make available to students such learning support and other services and facilities as it considers appropriate, but may vary what it provides from time to time (for example, the University may consider it desirable to change the way it provides library or IT support).

3. Financial or other losses

The University will not be held liable for any direct or indirect financial or other losses or damage arising from such closures, discontinuations, changes to or mergers of any programme of study, service or facility.

Upon acceptance by an applicant of an offer of a place at the University, the relationship between the applicant and the University becomes contractual. When the contract is formed between the student and the University it will last for the relevant academic year only unless the student withdraws from the programme or the programme is terminated. Please note: the right of a student to withdraw from a programme of study under the provisions set out in paragraph 1(b) above following a Change, are in addition to any statutory rights of cancellation that may exist under the Consumer Contracts (Information, Cancellation and Additional Charges) Regulations 2013. In entering into that contract, the terms of the contract will not be

enforceable by any person not a party to that contract under the Contracts (Rights of Third Parties) Act 1999.

Force majeure

The University will not be held liable for any loss, damage or expense resulting from any delay, variation or failure in the provision of programmes of study, services or facilities arising from circumstances beyond the University's reasonable control, including (but not limited to) war or threat of war, riot, civil strife, terrorist activity, industrial dispute, natural or nuclear disaster, adverse weather conditions, interruption in power supplies or other services for any reason, fire, boycott and telecommunications failure.

In the event that such circumstances beyond the reasonable control of the University arise, it will use all reasonable endeavours to minimise disruption as far as it is practical to do so provided that such endeavours do not undermine the University's Quality Assurance requirements.

Admissions Policy and Complaints

The University will assess applications in line with its then current Admissions Policy. The Admissions Policy, current at the time of publication, is published online and is available at www.southampton.ac.uk. The Admissions Policy is reviewed at least annually.

Applications for Medicine are also subject to the Selection Procedure and Policy for the Faculty of Medicine, which is available on our website www.southampton.ac.uk/medicine/undergraduate/apply.page

In case of conflict, the Selection Procedure and Policy for the Faculty of Medicine will take precedence.

Applicants may raise complaints related to admissions under the University's Regulations Governing Complaints from Applicants, which can be found in the Calendar at www.calendar.soton.ac.uk

Further information about, or clarification of, these procedures is available from Admissions Team, Student and Academic Administration, University of Southampton, Southampton SO17 1BJ, email: admissions@soton.ac.uk.

Data Protection

During the application procedure, the University will be provided with personal information relating to the applicant. An applicant's personal data will be held and processed by the University in accordance with the requirements of the Data Protection Act 1998.

© University of Southampton 2016

A copy of this brochure and the University's current information for students with disabilities and specific learning difficulties can be made available, on request, in alternative formats, such as electronic, large print, Braille or audio, and, in some cases, other languages.

Published and produced by Communications and Marketing.

www.southampton.ac.uk/medicine

UK and EU enquiries:

ugapply.fm@southampton.ac.uk

+44 (0)23 8059 4408

International enquiries:

global@southampton.ac.uk

+44 (0)23 8059 9699



When finished with this document please recycle it.